



## Profile:

Name: **Sue**

Scientific Name: ***Tyrannosaurus rex***

Age: **67 million years old**

Length: **42 feet**

Height: **13 feet at hips**

Weight: **6 to 8 tons when alive**

Birthplace: **Faith, South Dakota**

# Meet Sue

### Author's note:

**Sue, who is the largest and most complete *T. rex* skeleton found so far, agreed to sit down with me recently for an exclusive interview. It has been a long time since she spoke (or rather, honked) to anyone—nearly 67 million years!**



by Patricia J. Murphy

Of course, Sue didn't really sit down with me. The people who work with her at the Field Museum of Natural History in Chicago did. But this is what she might have said.

### How were you discovered?

First, paleontologist Sue Hendrickson found some of my bone parts at the bottom of a cliff. She thought they had fallen from higher up, so up she looked. That's when she saw three of my vertebrae (backbones) sticking out of the cliff wall.

### Where is your home today?

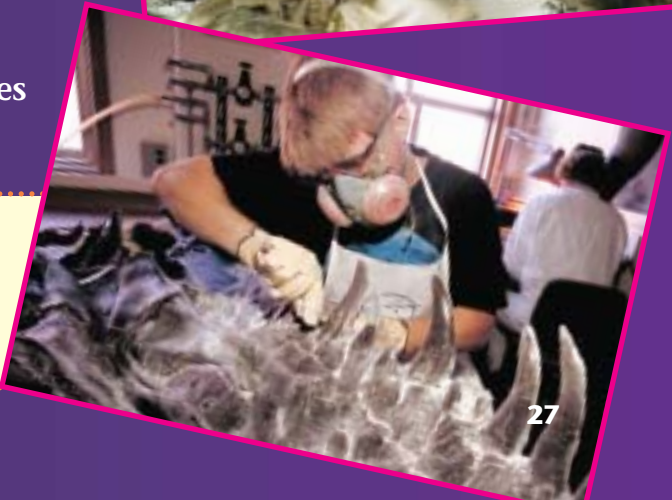
The Field Museum of Natural History in Chicago, Illinois.

### Why are you so special?

Well, I'm the largest, most complete, and best-preserved *T. rex* skeleton ever found. Scientists from all around the world come to study me. (Over 90 percent of my bones were found by Sue Hendrickson. In fact, I was named after her.)

### Do you plan to stay in Chicago?

Oh, yes! But two models of my skeleton have traveled to 23 U.S. cities. Soon, one model of my bones will begin a tour of Japan.



**Top:** Paleontologist Sue where *T. rex* Sue was found **Top center:** Unpacking Sue's bones at the museum **Bottom center:** Identifying what goes where **Bottom:** Making a cast, or copy, of Sue's skull

**Right:** A close-up of Sue's sharp, serrated teeth  
**Below:** Sue, back together again at the museum



### What's an average day like?

Most days, I just stand here, scaring . . . I mean . . . sharing my story with kids, adults, and dinosaur fans. Sometimes, scientists climb onto me to study

my bones. You see, these are my real bones. They're held together by a steel frame. My bones are housed in tiny metal "baskets," which are linked together.



Find out more about Sue at

[www.fieldmuseum.org/sue](http://www.fieldmuseum.org/sue)

### Do you demand any special care or food?

Not really. I get feather-dusted two or three times a year. And I eat quite well. I feed on the excitement of the

museum visitors. I'm so happy that I can teach them about dinosaurs. I hope someday that some of my fans will become paleontologists. Then, maybe, they could dig up some playmates for me. 🖱️

### Did you know?

Everything is real in Sue's displayed skeleton except the head, which is a copy. Why? It was too damaged and too heavy (it weighs 600 pounds) to put on the rest of Sue's body.

The skull has its own display case.

